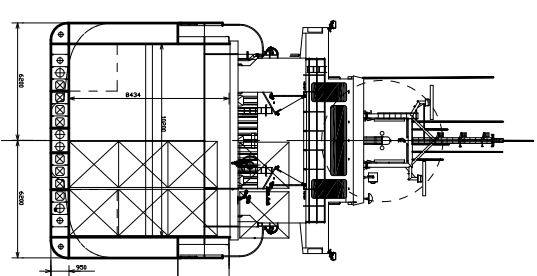
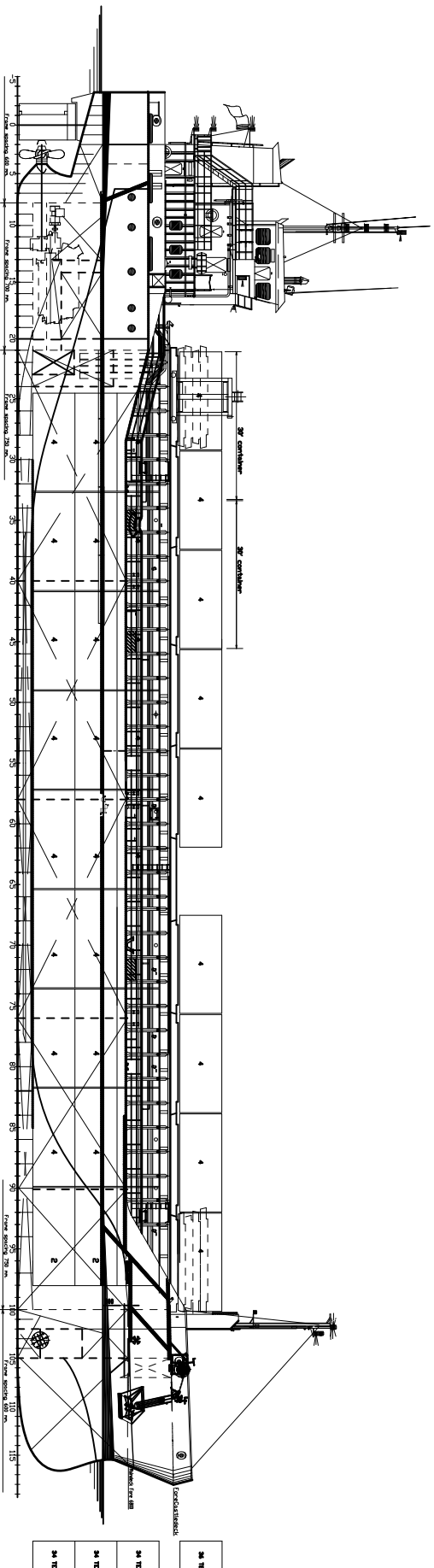


3520 dwt Multi Purpose General Cargo Vessel



Main Particulars:

Length over all 86.00 m
 Length betw. perp. 82.42 m
 Breadth, moulded 12.40 m
 Depth 6.70 m
 Draught at summer freeboard 5.30 m
 Corresp. deadweight 3520 tdw
 Deadweight with full tween decks 3400 tdw
 Speed at 4,40m depth 13.0 knots
 Fuel consumption at 90% MCR 6.0t HFO/day
 Fuel consumption harbour 0.5-1.0t MDO
 Gross Tonnage (GT) 2400 GT
 Complement crew of 10 pers.

Class:

Germanischer Lloyd
 ✘ 100 A5 E3
 Equipped for carriage of containers
 Solas II-2, reg.54
 ✘ MC E3 AUT
 Ice Class E3 (Finnish Swedish ice class 1A)
 Environmental passport
 Design temp.: sea water 0...+32°C
 air outside -25...+30°C

Tank Capacities:

Heavy fuel oil (IFO 180) 253 tons
 Marine diesel oil 38 tons
 Fresh water 33 m³
 Ballast water 1300 m³

Engine Plant:

Main Engine MAK 6M25 4-Stroke diesel
 CPP diam./ RPM MCR 1980 kW, 750 RPM
 2 x 120 kW, Aux. Diesel 2800mm / 210 RPM
 1 x 90 kW, Emerg. Diesel
 1 x 300 kVa, Shaft generator
 1 x 200 kW / 1470 rpm, Bow thruster fixed
 Gantry Crane:
 1x SWL 11 tons

Hold capacity:

Total hold capacity: abt. 175,500 cuft.
 Dimensions hold: 59.25 x 10.2 x 8.45
 Hold equipped with:
 -Removable grainbulkheads (thickness 0.4m)
 -Tween deck (complete hold area) on 4,4m and 5.1m above tanktop (thickness 0.4m)
 -Forward 3 hatchcovers equipped with sprinkler for IMO 1.1 cargo.

Tanktop load: 14mt/sqm
 Hatchcover load: 1,6mt/sqm
 Tweendeck load: 2,5mt/sqm

Container capacity:

In Hold: 102 teu
 On Hatches: 36 teu
 Total: 138 teu
 Stackload Hold: 20=70mt 40=90mt
 Stackload deck: 20=24mt 40=32mt

SHIPYARD: LILAMA-LISEMCO



Shipowner

Briese Schifffahrts GmbH & Co. KG